

Itto Can Solid Shortening Installation Instructions

1. Open right door of fryer and remove brace in oil reservoir cabinet.
2. Position melting unit in front of cabinet as shown in Figure 1.
3. Slide the melting unit into the cabinet ensuring the pickup assembly is in front of the heater unit as shown in Figure 2.
4. Carefully maneuver the female pickup tube assembly onto the four studs of the upright heater plate assembly, ensuring that all four studs are completely through all the holes prior to tightening the nuts.
5. Connect the female pickup assembly using the four provided nuts with a 7/16" socket as shown in Figure 3.
6. Use the provided six Phillips head screws to attach the melting unit to the bottom of the interior rails on both sides using the existing holes as shown in Figure 4.
7. Locate the female two-pin connection to the right of the FIB box assembly and the two pin male connection on the rear of the melting unit as shown in Figure 5.
8. Attach the connection to the male two pin connection on the rear of the melting unit as shown in Figure 6.
9. Place the harness into the tie strap on the rear of the heater assembly to protect the harness from damage.
10. Place the melting unit lid on an Itto can and slide the oil pickup tube nipple into the female suction receptacle in the rear of the cabinet. See Figure 7.
11. Lift and close the front of the melting unit. See Figure 8.
12. Ensure the melting unit power switch is in the "ON" position. See Figure 8.



Figure 1: Position melting unit in front of cabinet.



Figure 2: Slide the melting unit in the cabinet.



Figure 3: Attach the suction assembly to the melting unit.



Figure 6: Attach the connections.



Figure 4: Attach the melting unit to the rails using the six Phillips head screws.



Figure 5: Locate the two pin connections.



Figure 7: Place top on Itto can and slide into female suction assembly in the rear of the cabinet.

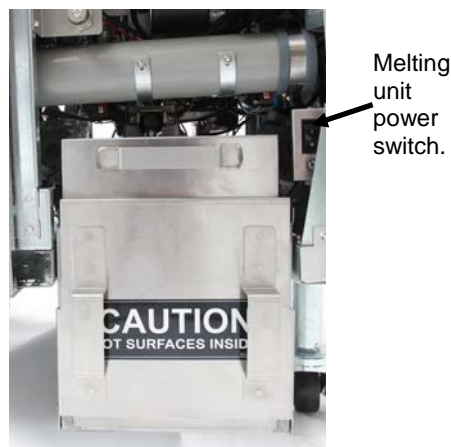


Figure 8: The assembled melting unit is shown in position.

Itto Solid Shortening Melting Unit Use Instructions

1. Ensure shortening melting unit is on (see Figure 1).
2. Slide up and drop down the front cover (see Figure 2).
3. Slide out the empty Itto can from the fryer if present (see Figure 3).
4. Lift off the suction lid assembly and wash, rinse and sanitize (see Figure 4). Dry with paper towels.
5. Remove the empty Itto can. Clean the holding tray using paper towels and KAY Heavy Duty Degreaser every can change or at a minimum, weekly.
6. Remove lid from new Itto can and lower suction lid into the shortening (see Figure 5).
7. Replace the container in the fryer (see Figure 6).
8. Replace the front cover lowered in step 2.
9. Allow time for solid shortening to melt. The low oil reservoir indicator will come on if the fryer calls for oil before the shortening in the melting unit is liquid.
10. Once the shortening is fully melted, press the orange reset button to turn off the indicator and reset the top off system.
11. For best results, **DO NOT TURN OFF** the solid shortening melting switch overnight.
12. The power switch for the melting unit is also used as a reset switch if the system's high limit temperature is reached.

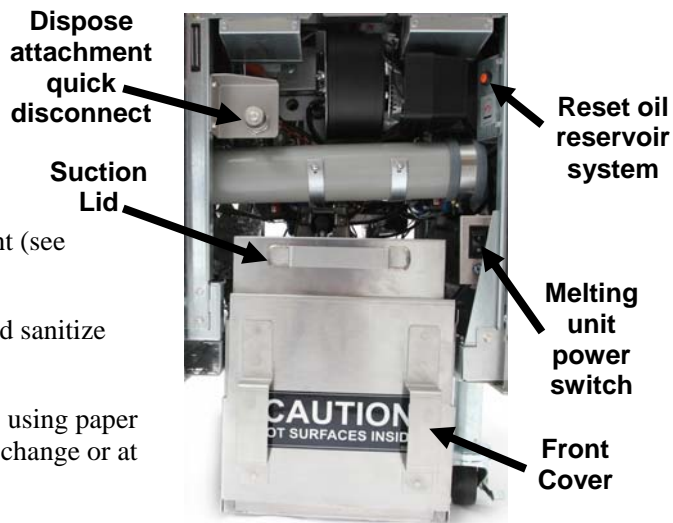


Figure 1



Figure 2



Figure 3



Figure 4



Figure 5



Figure 6



WARNING

The surfaces of the solid shortening heater are hot. Do not touch with bare hands. Wear protective clothing when changing the shortening.